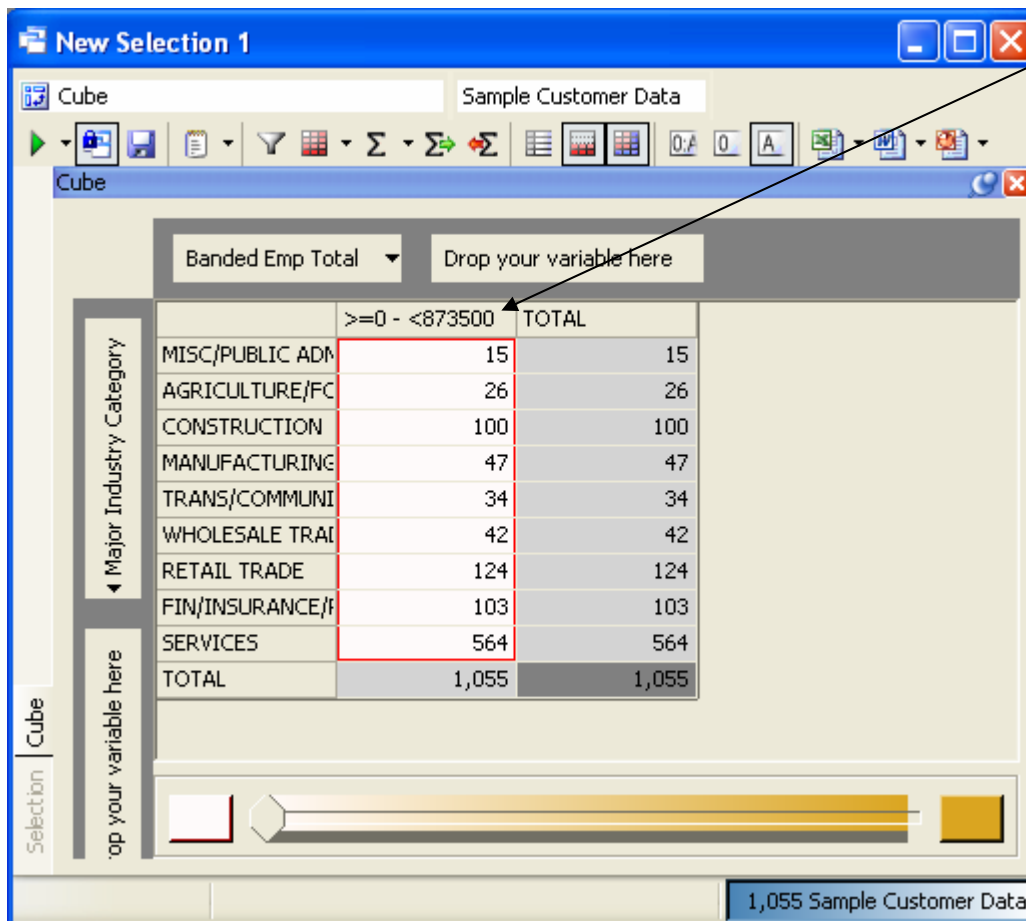


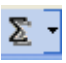
## Tips for Summing Columns of data in a Data Cube:

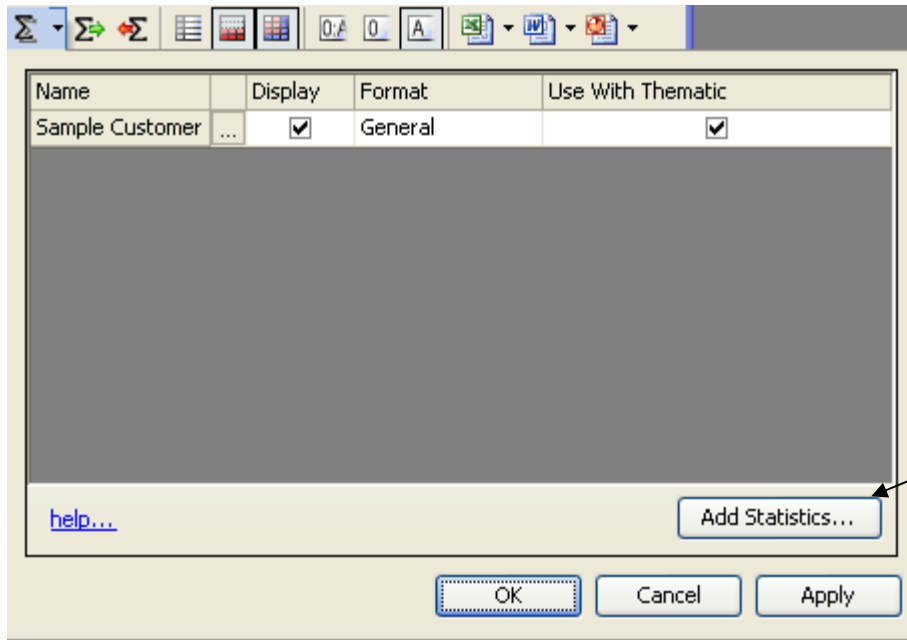
In order to sum the data, the field must be a numeric field, i.e. it must have the <sup>123</sup> indicator in front of the variable. For our example we will use: Employee Total. I have a basic query for my selection and I drop a data cube on top. I've added Major Industry Category for my rows and Employee Total for my columns. Note, using the <sup>123</sup> Employee Total will automatically band the data together so you will see the data grouped into one column. The heading shows the high and low for the band.



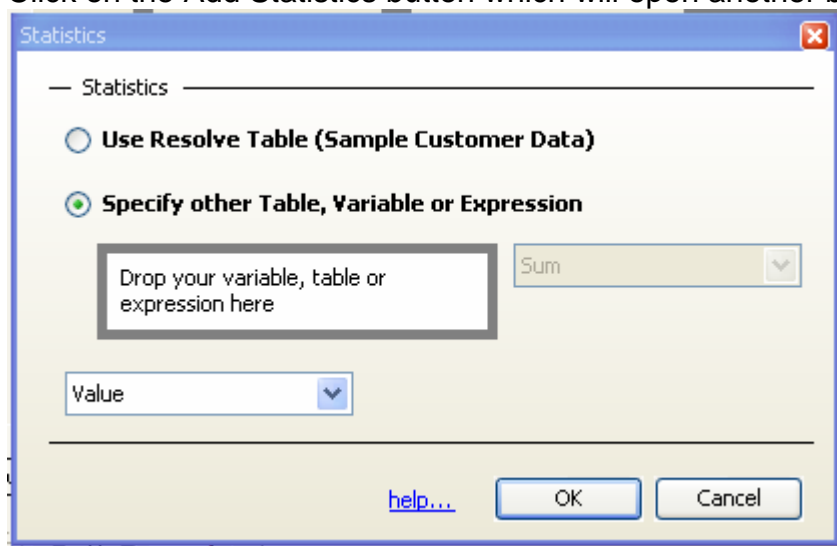
The screenshot shows a window titled "New Selection 1" with a toolbar and a data cube. The data cube has a header "Banded Emp Total" and a dropdown "Drop your variable here". The data is organized into a table with "Major Industry Category" on the rows and "Employee Total" on the columns. The data is banded, showing a range of values from 15 to 564. The total for the column is 1,055.

Major Industry Category	Employee Total
MISC/PUBLIC ADM	15
AGRICULTURE/FC	26
CONSTRUCTION	100
MANUFACTURING	47
TRANS/COMMUNI	34
WHOLESALE TRAI	42
RETAIL TRADE	124
FIN/INSURANCE/F	103
SERVICES	564
TOTAL	1,055

Now, to find the sum of Employee Total for each cell and to sum it for the column, you will need click on the  Statistics button. This will open a new box:

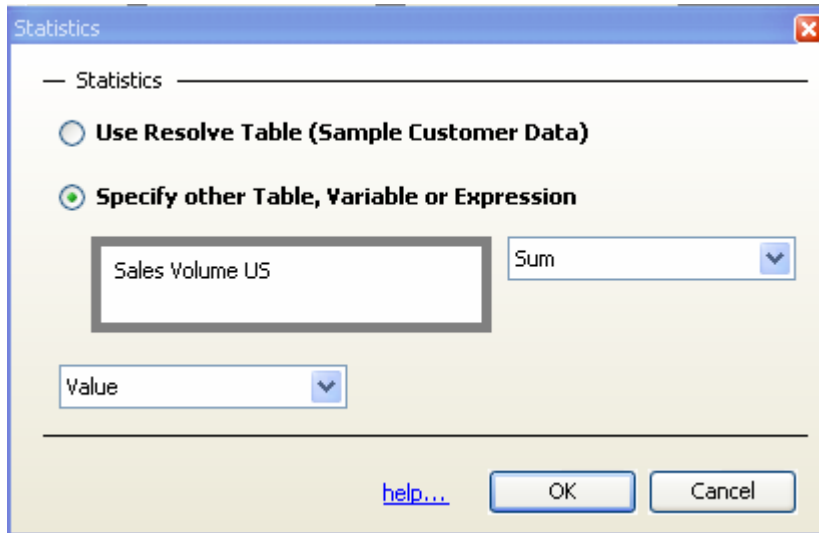


Click on the Add Statistics button which will open another box:



The default will be “use resolve table” you will need to click the second option, “specify other table, variable or expression.” Then you will need to add the variable that you want MI to sum. Once you drag and drop the variable onto the space indicated, the “sum” option will come to life and you can select sum or any of the other options.

Here, I’ve added Sales Volume to the box and I will leave the option set to “sum”.

A screenshot of a "Statistics" dialog box. The dialog has a title bar with "Statistics" and a close button. Inside, there are two radio buttons: "Use Resolve Table (Sample Customer Data)" and "Specify other Table, Variable or Expression". The second radio button is selected. Below it, there is a text box containing "Sales Volume US" and a dropdown menu showing "Sum". At the bottom, there is a dropdown menu showing "Value". At the very bottom, there are three buttons: "help...", "OK", and "Cancel".

Statistics

— Statistics —


☐ Use Resolve Table (Sample Customer Data)

☒ Specify other Table, Variable or Expression

Sales Volume US Sum

Value

[help...](#) OK Cancel

Now click “Ok” You will notice the blanks. That means you will need to rebuild the page. Click the Build/Execute button  to rebuild.

**New Selection 1 - Press Build To Show Changes**


Cube Sample Customer Data

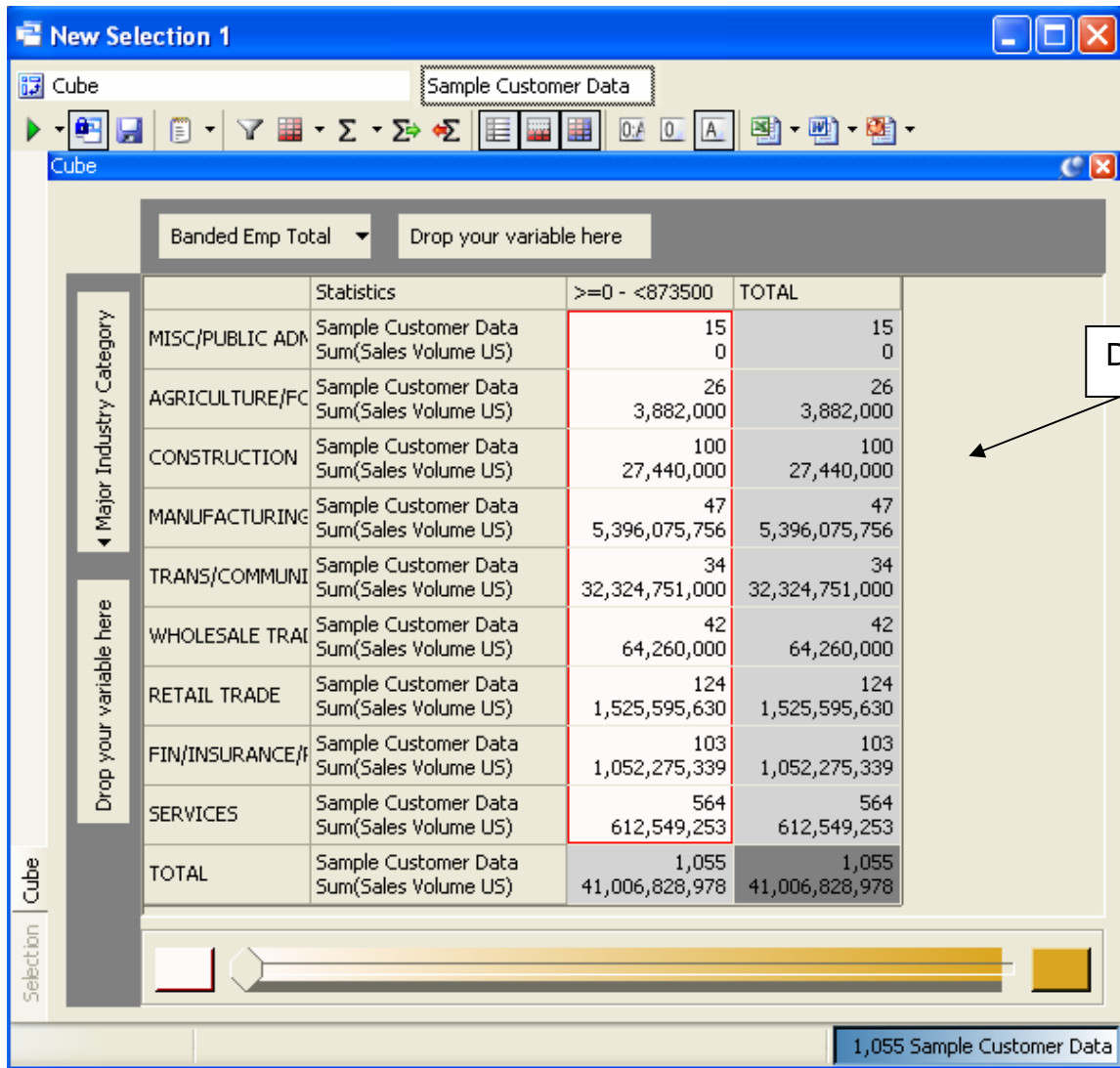
Cube \*

Banded Emp Total Drop your variable here

	>=0 - <873500	TOTAL
Major Industry Category		
MISC/PUBLIC ADM	15	15
AGRICULTURE/FC	26	26
CONSTRUCTION	100	100
MANUFACTURING	47	47
TRANS/COMMUNI	34	34
WHOLESALE TRAI	42	42
RETAIL TRADE	124	124
FIN/INSURANCE/F	103	103
SERVICES	564	564
TOTAL	1,055	1,055

Cube \*

You can also turn on the legend so you can see what each piece of data represents. You can do that by clicking on the  Show Statistics legend.



You can now add other variables to sum on by simply dragging and dropping the variable below the data cube or to the right of the data cube. In the example above, there is no room below the data cube so you must drop the new variable to the right. So I drop the Employee Here variable to the right.



After rebuilding the cube by clicking the  button, I get this:

Cube				
Banded Emp Total		Drop your variable here		
Major Industry Category	MISC/PUBLIC ADM	Statistics	>=0 - <873500	TOTAL
		Sample Customer Data	15	15
		Sum(Sales Volume US)	0	0
	AGRICULTURE/FC	Sum(Emp Here)	161	161
		Sample Customer Data	26	26
		Sum(Sales Volume US)	3,882,000	3,882,000
		Sum(Emp Here)	97	97
	CONSTRUCTION	Sample Customer Data	100	100
		Sum(Sales Volume US)	27,440,000	27,440,000
		Sum(Emp Here)	279	279
Drop your variable here	MANUFACTURING	Sample Customer Data	47	47
		Sum(Sales Volume US)	5,396,075,756	5,396,075,756
		Sum(Emp Here)	493	493
	TRANS/COMMUNI	Sample Customer Data	34	34
		Sum(Sales Volume US)	32,324,751,000	32,324,751,000
		Sum(Emp Here)	1,554	1,554
	WHOLESALE TRAI	Sample Customer Data	42	42
		Sum(Sales Volume US)	64,260,000	64,260,000
		Sum(Emp Here)	221	221
	RETAIL TRADE	Sample Customer Data	124	124
		Sum(Sales Volume US)	1,525,595,630	1,525,595,630
		Sum(Emp Here)	899	899

NOTE: When using unmatched customer records, you should always use “unique site indicator” in your selection to eliminate duplicate counting of the unmatched records.